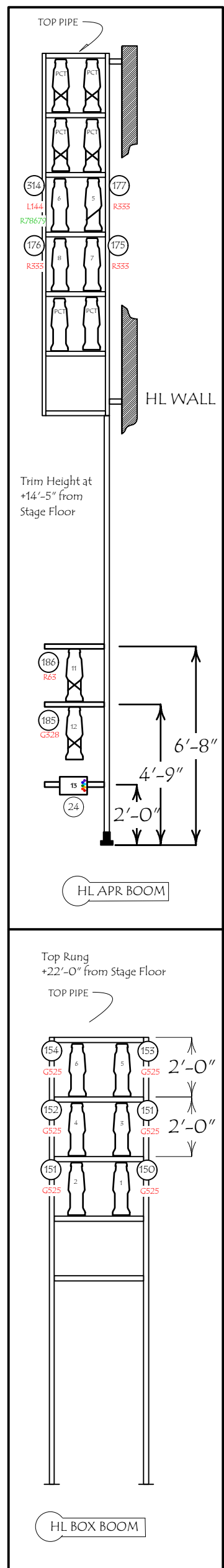
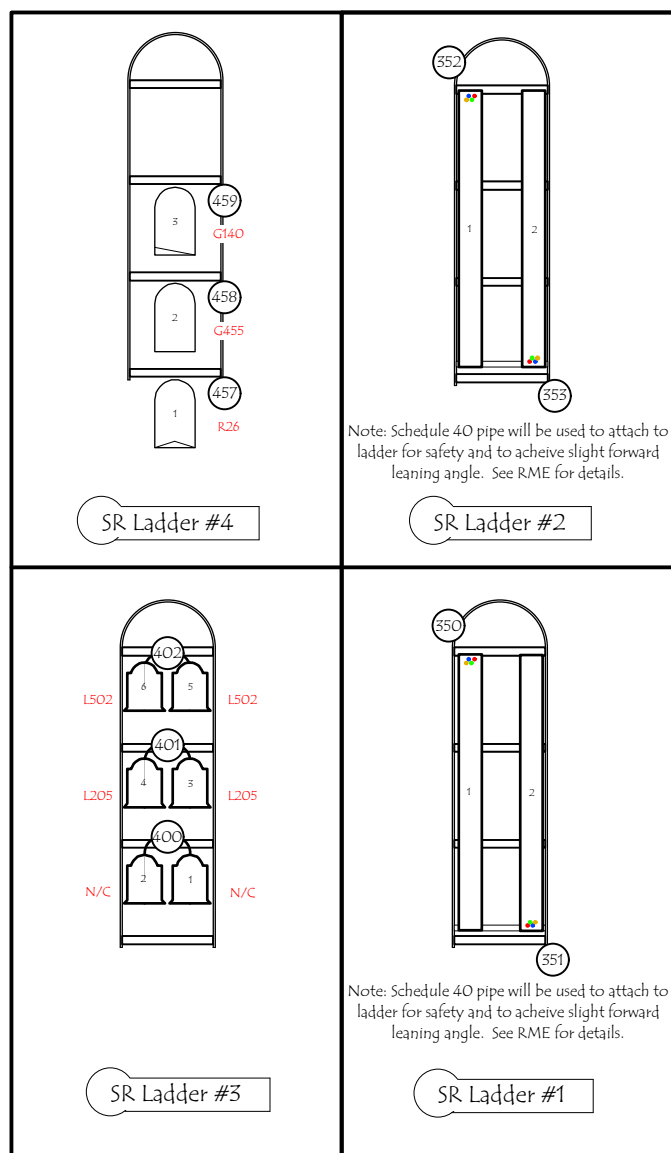


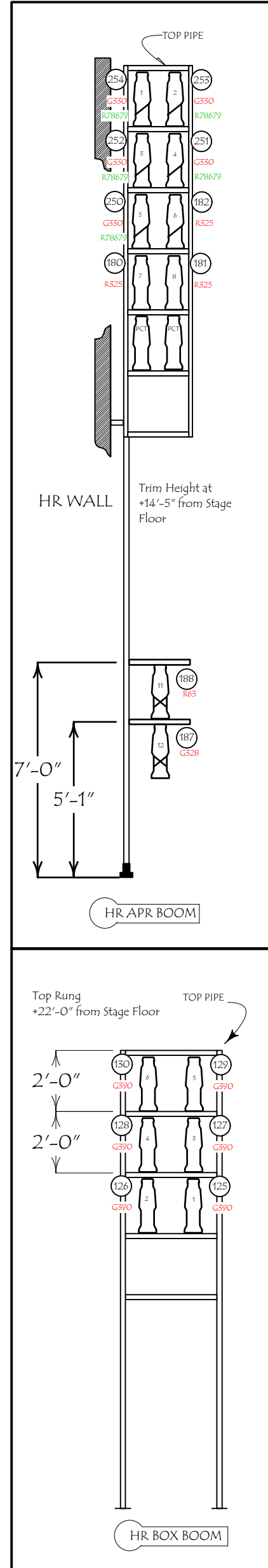
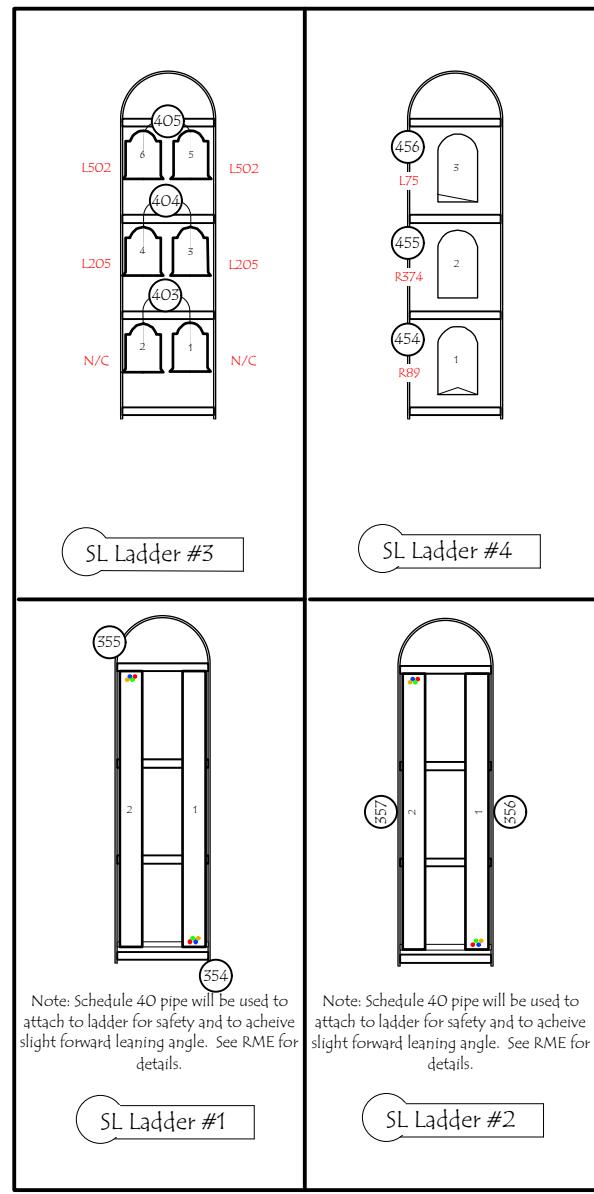
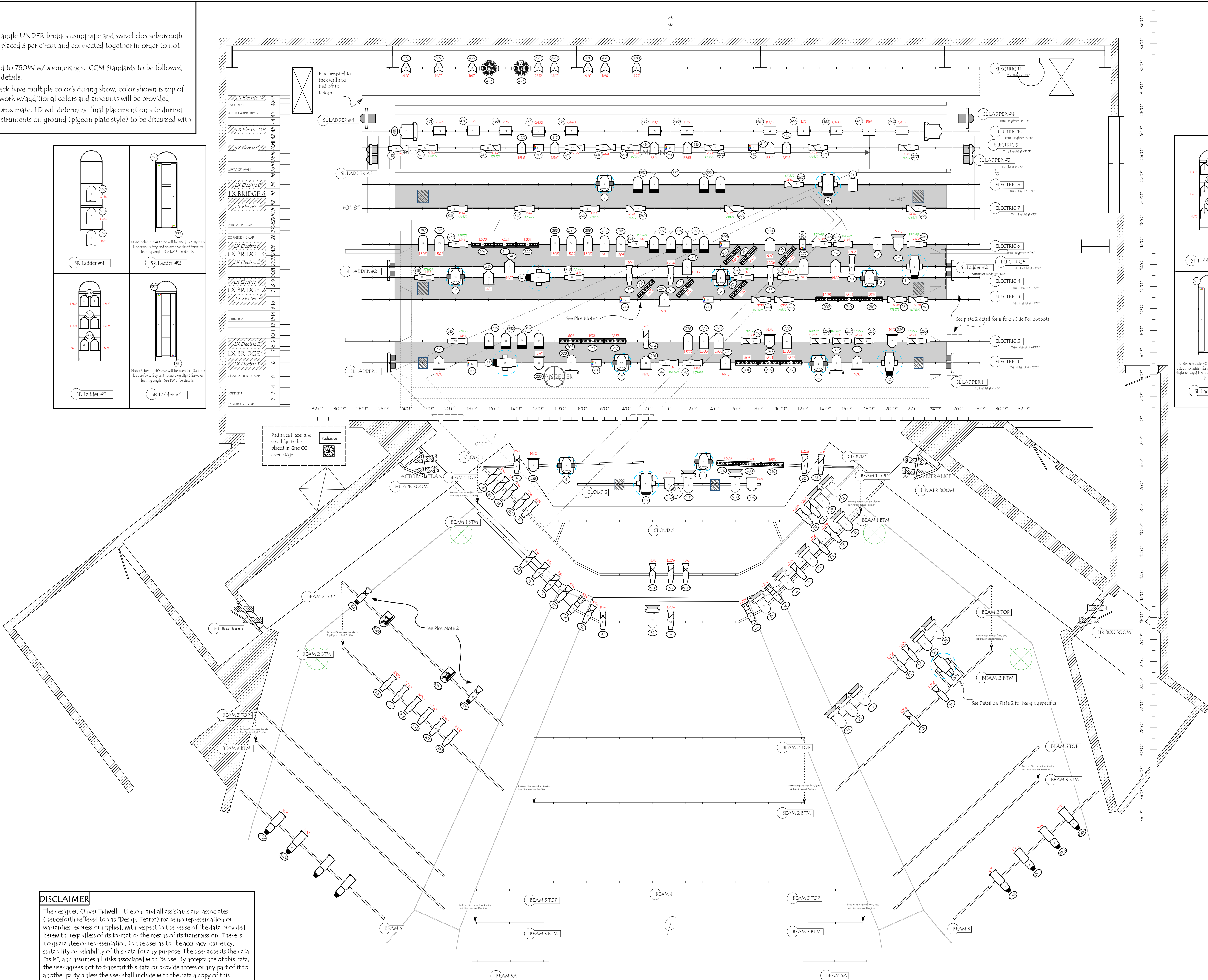
Plot Notes

1. 2' Ministrips to be hung at angle UNDER bridges using pipe and swivel cheeseborough combo. Ministrips MUST be placed 3 per circuit and connected together in order to not blow lamps.
2. Two S4 Followspots lamped to 750W w/boomerangs. CCM Standards to be followed in creating, see ME/RME for details.
3. Broad Cyc's and 5K's on Deck have multiple color's during show, color shown is top of show color, color swap paperwork w/additional colors and amounts will be provided
4. Ground row location is approximate, LD will determine final placement on site during load in. Method of placing instruments on ground (pigeon plate style) to be discussed with RME before Load in.



DISCLAIMER

The designer, Oliver Tidwell Littleton, and all assistants and associates (henceforth referred too as "Design Team") make no representation or warranties, express or implied, with respect to the reuse of the data provided herewith, regardless of its format or the means of its transmission. There is no guarantee or representation to the user as to the accuracy, currency, suitability or reliability of this data for any purpose. The user accepts the data "as is", and assumes all risks associated with its use. By acceptance of this data, the user agrees not to transmit this data or provide access or any part of it to another party unless the user shall include with the data a copy of this disclaimer. The Design Team, assumes no responsibility for actual or consequential damage incurred as a result of any user's reliance on this data.



General Notes

- All instruments to be hung with safety cables properly attached.
- Have R119 + R132 available at focus for all instruments
- Bridges are 50' long of planking. This will use twenty 10' lengths of bridge (22 in stock). Center the middle plank on pipes.

Key to Instrumentation

Feature Symbol	Description
	Par 64 NSP 1000W
	Par 64 VNP 1000W
	Par 64 WFL 1000W
	Par 64 ACL 1000W
	Par 64 MFL 1000W
	Elation Sniper 4R Pro
	6' MR16 MiniStrip
	2' MR16 MiniStrip
	ETC Source 4 14 Degree 575W
	ETC Source 4 19 Degree 575W
	ETC Source 4 26 Degree 575W
	ETC Source 4 36 Degree 575W
	ETC Source 4 50 Degree 575W
	ETC Source 4 Zoom 15-30 Degree 575W
	High End Shape Shifter
	ETC Sclador VIVID-R
	Source 4 PAR MFL 575W
	L&E Broad Cyc 1000W
	1K 6" Fresnel 1000W
	2K 8" Fresnel 2000W
	5K 12" Fresnel 5000W
	Elation Color Chorus
	Philips VL1100 - AS
	Philips VL1100 - TS
	Philips VL3500 Spot
	Philips VL2500 Wash
	Par 64 Strobe Cannon
	Altman Sky Cyc 1000W

Accessories

Feature Symbol	Description
	6.25" Half Hat
	6.25" Top Hat
	7.5" Barn Door
	10" Barn Door
	CXI Color Fusion Scroller 10"
	Speaker Placement for Sound
	Color Ram II 15" Scroller
	12" Side Arm
	18" Side Arm
	24" Side Arm

Typical

GOBO #

GELL #

UNIT #

CHANNEL #

DESIGNER: Oliver Littleton

ALD 1: Elanor Eberhardt

ALD 2: Frank J. Viskup

ME: Andy Hillman

RLD: James H. Gage

RME: Adam Zeek

DATE: 2/20/2017

SCALE: 1/4" = 10"

DRAFTED BY: OTL & EQE

REVISION:

Lighting Plot

PLATE

1 OF 3

FILE REF:..